



Parental Survey 2016 - Report for respondents

THANK YOU

Many thanks to all of you who responded to the survey. Thank you for taking the time - it is greatly appreciated. Below you will find a summary report where we selected the questions and answers that we thought would be most interesting to you. If you would like to see a full report covering all of the questions or if you have any other comments please do contact Paul Finnis at paul@learningfoundation.org.uk.

The Learning Foundation

The Learning Foundation is a consultancy with a social purpose. We inspire learning through working with schools and parents to provide 1:1 access for every pupil, no matter what their family's financial circumstances may be. Our experience, expertise and our mission to deliver enhanced learning through 1:1 technology to every child makes us a partner of first choice for schools engaging with technology in learning. We are a charity which in the last 15 years has partnered with over 1000 schools to support them on their journey to successfully providing 1:1 technology for every pupil. As we are an independent charity and with a deep understanding of the education system we can provide objective, individualised expertise that delivers successful, low stress, practical and sustainable implementation.

We are passionate about getting it right for all our schools.

Introduction to the report

The survey was conducted in June 2016. The survey was mailed to around 20,000 parents of children at schools which had a 1:1 programme (where every child has access to their own device) and where they were making donations to the scheme or had made donations in the past. In total we received 1057 fully completed questionnaires from parents across the majority of schools we work with. Between them they had 1,428 children in school e-learning programmes across all age ranges but with 80% of children being in Year 7 and above. There were an additional 890 partially completed but these have not been included in this report. 75% of respondents were still actively donating.

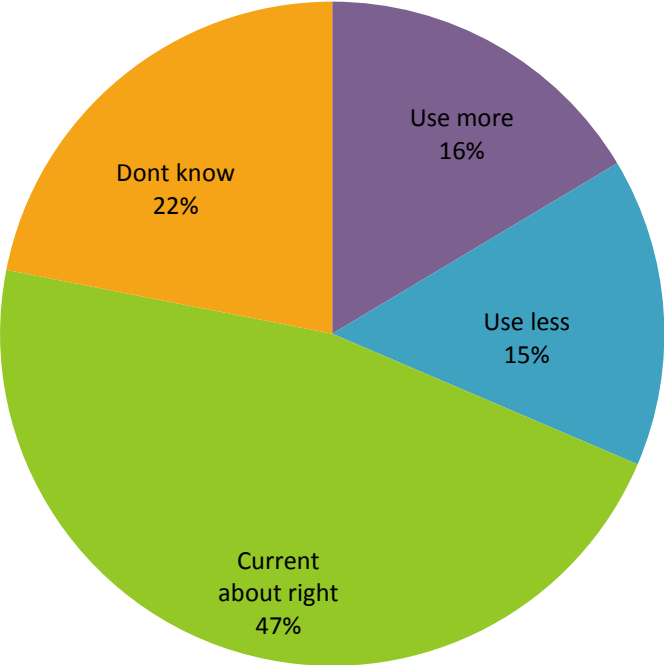
190 schools were given the option of being included in the survey of which 4 chose not to be involved. This survey is conducted primarily to support the schools with which the Foundation works and each partner school receives a copy of the full report with a comparative breakdown of responses from their parents alone where these were received in sufficient numbers. We share this report widely beyond our partner schools as we recognise that the information can be useful to others and especially schools contemplating the introduction of technology. The survey was conducted anonymously to ensure parents felt able to say exactly what they felt.

Executive Summary

Parental interest and engagement are widely recognised as major contributors to a child's educational prospects. E-Learning programmes offer schools and parents a practical way to work together in the interests of furthering and deepening the education of their children. With school budgets under more pressure than ever, parental contributions are becoming vital for schools towards the cost of providing technology for individual pupil use and making entire programmes possible.

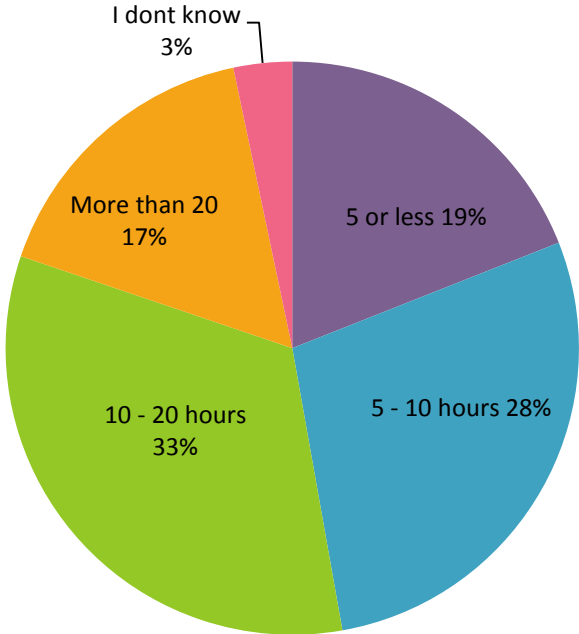
This full survey was fascinating for us from many angles. The survey is useful for schools and parents and for the Foundation in better understanding where the opportunities, successes and pinch-points might be.

In general, what do you think about the amount of time the school uses devices in class?



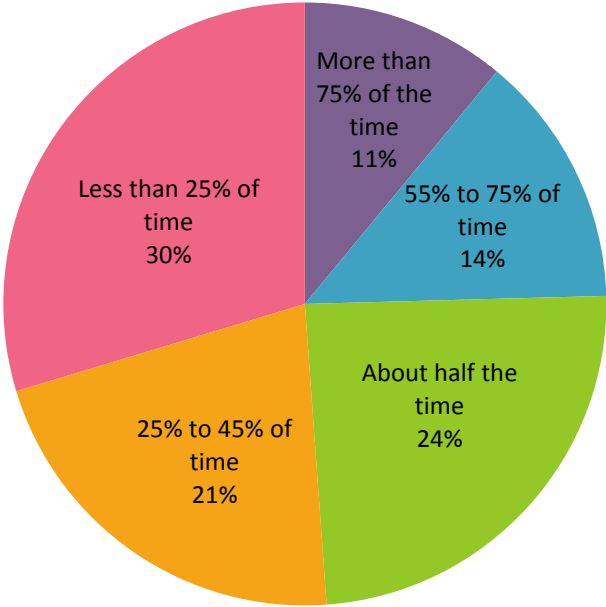
The current use of devices seems about right	47%
I don't know/not sure	22%
They should use the devices more	16%
They should use the devices less	15%

Please estimate how many hours per week your child spends using their device at home.



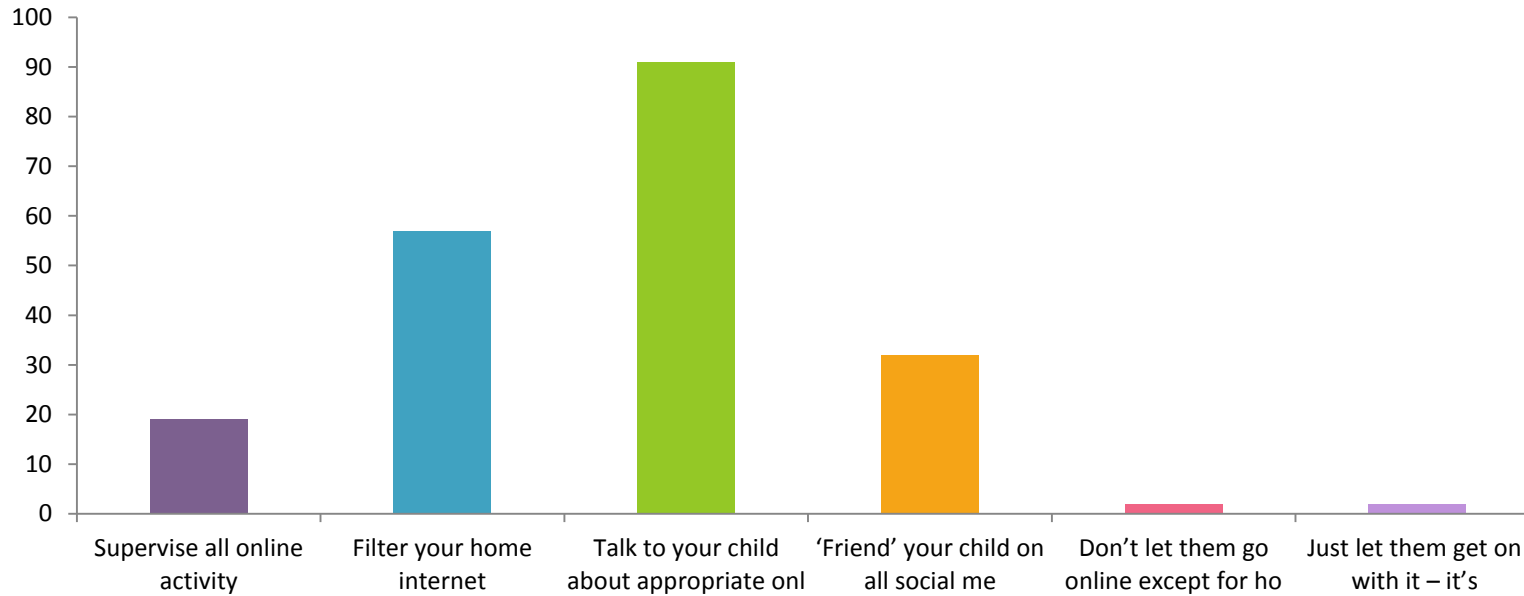
5 hours or less a week	19%
Between 5 and 10 hours a week	28%
Between 10 and 20 hours per week	33%
More than 20 hours per week	17%
I don't know/not applicable	3%

Roughly how much of this time do you estimate is spent on educational activities such as completing homework, doing internet research for school projects, communicating with teachers by email, revising for exams or time spent on educational games/apps?



More than 75% of the time	11%
55% to 75% of time	13%
About half the time	24%
25% to 45% of time	21%
Less than 25% of time	29%

E-Safety. What do you do currently to keep your children safe online? Tick as many as apply.



Supervise all online activity	19%
Filter your home internet	57%
Talk to your child about appropriate online behaviour	91%
'Friend' your child on all social media sites	32%
Don't let them go online except for homework research	2%
Just let them get on with it - it's up to the school to educate them	2%

Are you finding that you are able to spend more time supporting your child’s learning – either with homework or in other ways?

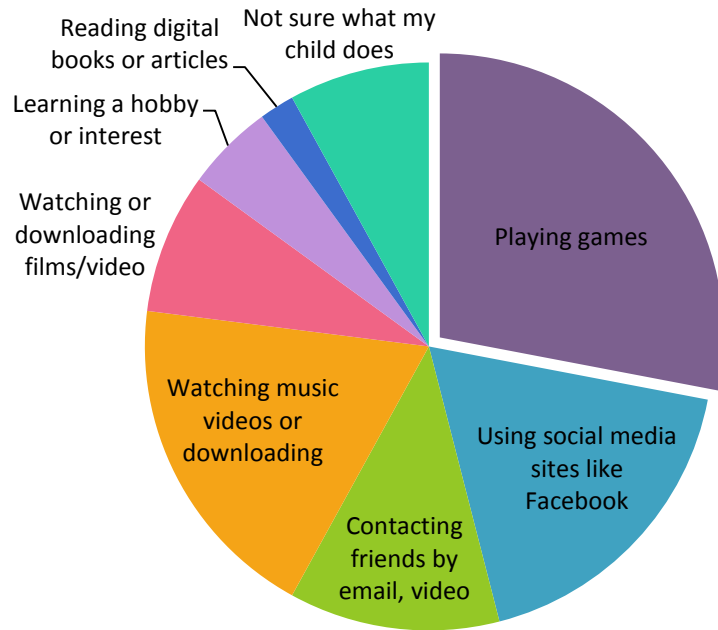
	Yes	No
Homework	40%	60%
Other ways	36%	64%

Which subjects are you helping your children with most?

Subject	Score*	Rank
Mathematics	8,777	1
English	6,525	2
Science	5,267	3
History	3,086	4
Modern Foreign Language	2,338	5
Geography	2,261	6
Information Technology	1,666	7
Art	1,366	8
Design and Technology	1,361	9
Religious Education (RE)	1,279	10
Music	869	11
Physical Education (PE)	809	12
Sex Education	783	13

*Score is a weighted calculation. Items ranked first are valued higher than the following ranks, the score is the sum of all weighted rank counts

Which of the following statements best describes your child’s use of the device for activities that are NOT school or learning related? Please choose just one:



Playing games	28%
Using social media sites like Facebook, Instagram, Snapchat, Bebo, Twitter etc.	18%
Contacting their friends by email, video-link, web-chat or other messenger service	12%
Watching music videos or downloading/listening to music – such as Youtube etc	19%
Watching or downloading films and video content such as Netflix etc	8%
Learning about a hobby or interest	5%
Reading digital books or online articles	2%
I am not sure what my child does with the device other than school-related activity	8%

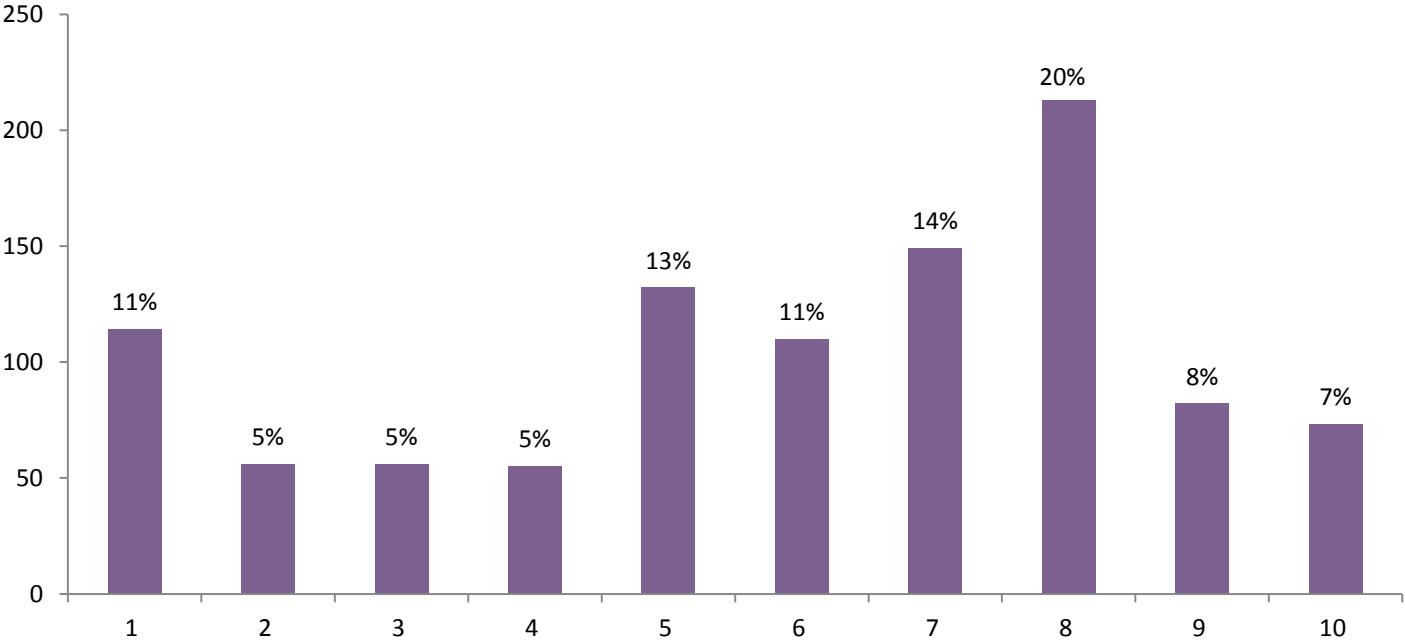
Please indicate how much you agree with the following statements. My child....

	Agree a lot	Agree a little	Disagree a little	Disagree a lot
... demonstrates improved attitude towards their studies	14.5%	45.6%	21.4%	18.5%
... demonstrates improved behaviour at school	6.3%	32.4%	35.4%	25.9%
... demonstrates improved behaviour at home	4.6%	24.3%	40.3%	30.7%
... is more interested or engaged in their schoolwork	13.4%	41.2%	26.8%	18.5%
... is more interested or engaged in their homework	14.2%	42.3%	24.4%	19.1%
... is able to complete their school work more easily	25.6%	47.4%	14.5%	12.5%
... is better able to complete home work	24.8%	45.4%	16.7%	13.1%
... more likely to involve me in their schoolwork	8.8%	28.9%	35.3%	27%
... takes more responsibility for their own learning	24.3%	45.5%	16.8%	13.3%
... tackles school/homework in a more creative way	20.7%	42.4%	21.4%	15.5%
... has developed better IT skills	44.5%	41.5%	7%	7%
... receives more positive comments from teachers	8.3%	33.3%	39.4%	19%
... receives better marks for school or homework	8.4%	33.8%	39.3%	18.5%

Please indicate how much you agree with the following statements.

	Agree a lot	Agree a little	Disagree a little	Disagree a lot
... used the child's device ourselves	5%	17%	14%	63%
... benefitted from not sharing the family computer so much	23%	40%	15%	22%
... been able to help my child or children more with their homework	11%	34%	28%	26%
... improved our own IT skills or knowledge	10%	26%	30%	35%
... felt more involved in our child's education	10%	31%	28%	32%

How beneficial do you feel the programme is/has been to your family overall? Please rate from 0 to 10



Please tell us how you feel about the following issues and the importance of receiving support about these, giving a rating from 1-5, where 1 is unimportant and 5 is very important.

	1 Unimportant	2	3	4	5 V important
Info from school to help support children's learning at home	1%	2%	11%	20%	66%
Info from school about how devices are used in class	1%	2%	16%	28%	53%
Info & support to help limit child's time on device at home	6%	8%	26%	21%	39%
Info & support to keep children safe online	1%	2%	10%	17%	70%
Info & support to help children with special e-learning needs	6%	4%	20%	23%	48%

If you would like more information, further analysis or comment please contact Paul Finnis, CEO at the Learning Foundation.

If you are a school or parent and would like advice and guidance on introducing technology into learning or making the most of what you already have please go to our website – www.learningfoundation.org.uk where you'll find lots of materials, research data and advice. You are also welcome to contact us at any time on 01344 636413.



Passionate about getting IT right for our schools

Index House, St George's Lane, Ascot, Berkshire SL5 7ET Telephone: 01344 636413